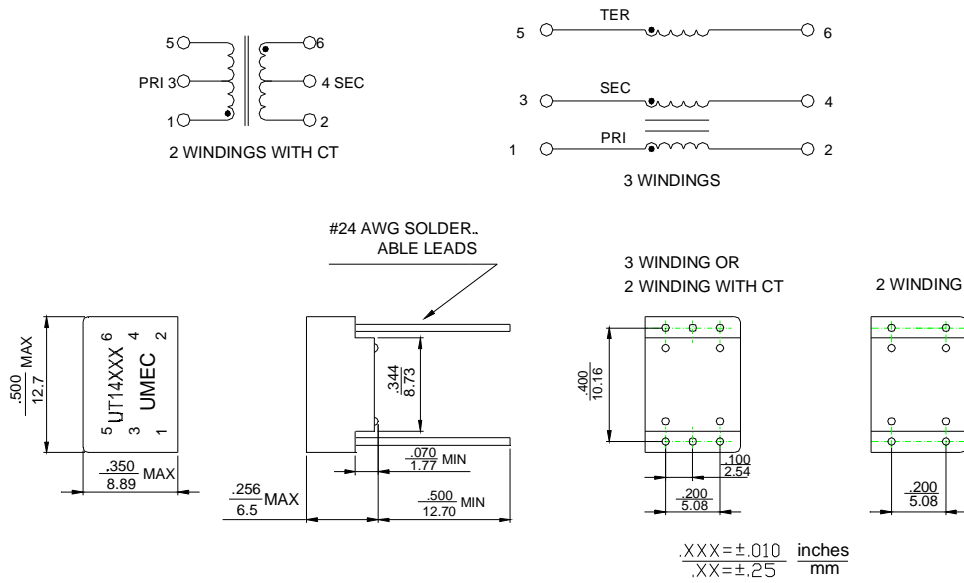


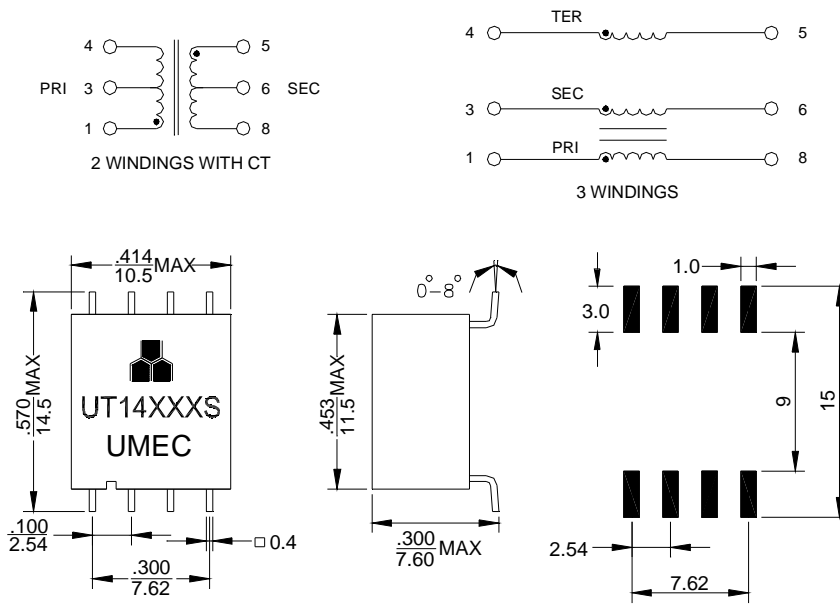
# GENERAL PURPOSE TRANSFORMERS

- **SMALL PHYSICAL SIZE** – A wide range of designs are available in a case 0.5 inches long by 0.35 inches wide by 0.240 inches high.
- **UNIQUE FEATURES** – Wide range of inductances and turns ratio suitable for a variety of circuit applications.
- **RATING RANGE**
  - Average Power Rating (40°C Rise).....500 mw
  - Dissipation Rating.....150 mw
  - Peak Pulse Voltage .....100 volts
  - High Potential Test.....500 vdc
  - Insulation Resistance.....10,000M ohm
- Custom designs available for high reliability and application compatibility.

## THT Package



## SMD Package



# GENERAL PURPOSE TRANSFORMERS

## ELECTRICAL SPECIFICATIONS @25°C

Model <sup>1)</sup> Number	Turns Ratio (±5%)	Primary Sine Wave OCL (μH Min.)	Primary ET-Constant (V-μs Min.)	Rise Time (ns Max.)	Pri/Sec Cw/w (pf Max.)	Pri/Sec Leakage Inductance (μH Max.)	Primary DCR (ohms Max.)	Secondary DCR (ohms Max.)	Tertiary DCR (ohms Max.)
UT14760	1:1:1	5000	25.0	10.5	60	1.3	3.9	3.9	3.9
UT14761	1:1:1	2000	16.0	8.2	37	0.8	2.5	2.5	2.5
UT14762	1:1:1	500	8.5	5.3	32	0.4	1.3	1.3	1.3
UT14763	1:1:1	200	5.0	4.2	18	0.3	0.9	0.9	0.9
UT14764	1:1:1	50	5.2	5.6	18	0.5	1.3	1.3	1.3
UT14765	1:1:1	20	3.2	4.1	21	0.4	0.9	0.9	0.9
UT14766	1:1:1	10	3.7	5.1	22	0.5	0.9	0.9	0.9
UT14767	2:1:1	5000	25.0	16	33	3.6	3.9	2.0	2.0
UT14768	2:1:1	2000	16.0	11	19	1.8	2.5	1.4	1.4
UT14769	2:1:1	500	8.5	5.6	11	1.1	1.3	0.7	0.7
UT14770	2:1:1	200	5.0	3.2	8	0.8	0.9	0.5	0.5
UT14772	2:1:1	20	5.8	7.5	12	1.5	1.3	0.8	0.8
UT14777	3:1:1	200	5.0	3.6	7	1.1	0.9	0.4	0.4
UT14779	3:1:1	20	3.2	2.7	6	1.3	0.9	0.4	0.4
UT14782	4:2:1	2000	16.0	13	20	2.5	2.5	1.4	0.8
UT14783	4:2:1	500	8.5	4.7	13	0.9	1.4	0.8	0.5
UT14784	4:2:1	200	5.0	3.7	8	0.8	0.9	0.5	0.4
UT14270	1ct:1ct	2000	16.0	8.2	37	0.8	2.5	2.5	—
UT14271	1ct:1ct	500	8.5	5.3	32	0.4	1.3	1.3	—
UT14272	1ct:1ct	200	5.0	4.2	18	0.3	0.9	0.9	—
UT14273	1ct:1ct	50	5.2	5.6	18	0.5	1.3	1.3	—
UT14274	1ct:1ct	20	3.2	4.1	21	0.4	0.9	0.9	—
UT14275	1ct:1ct	10	3.7	5.1	22	0.5	0.9	0.9	—
UT14276	2ct:1ct	2000	16.0	11	19	1.8	2.5	1.4	—
UT14277	2ct:1ct	500	8.5	5.6	12	1.2	1.4	0.8	—
UT14278	2ct:1ct	200	5.0	3.2	8	0.8	0.9	0.5	—
UT14279	2ct:1ct	50	5.2	5.2	12	1.3	1.3	0.7	—
UT14280	2ct:1ct	20	5.8	7.5	12	1.5	1.3	0.8	—
UT14281	2ct:1ct	10	3.7	4.5	9	1.5	0.9	0.5	—

1) Model no. Description: UT14XXX THT Package  
UT14XXXS SMD Package

2) For RoHS compliant products, a.)The Ordering Code: TG-Model No. ex. TG-UT14760  
b.) SMD Solder : Sn/ Ag/ Cu; THT Solder : Sn/ Cu ; c.)Date Code suffix to "G" (xxxxG)

\*Specifications are subject to change without prior notice.

