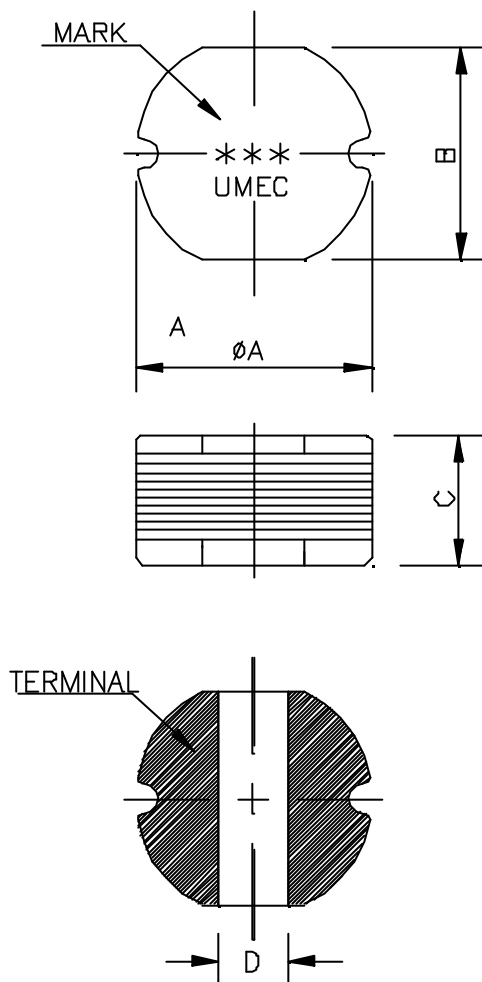


# SMD POWER INDUCTORS

## LS TYPE

### CONFIGURATIONS & DIMENSIONS



UNIT:mm

MODEL NAME	A	B	C	D
LS43-***	$4.5 \pm 0.3$	$4.0 \pm 0.3$	$3.2 \pm 0.3$	1.0 TYP.
LS54-***	$5.8 \pm 0.3$	$5.2 \pm 0.3$	$4.5 \pm 0.4$	1.3 TYP.
LS73-***	$7.8 \pm 0.3$	$7.0 \pm 0.3$	$3.5 \pm 0.5$	2.1 TYP.
LS75-***	$7.8 \pm 0.3$	$7.0 \pm 0.3$	$5.0 \pm 0.5$	2.1 TYP.
LS104-***	$10.0 \pm 0.3$	$9.0 \pm 0.3$	$4.0 \pm 0.5$	2.9 TYP.
LS105-***	$10.0 \pm 0.3$	$9.0 \pm 0.3$	$5.4 \pm 0.4$	2.9 TYP.

DATA SHEET 02-30 MAR./06  
1 OF 5



# SMD POWER INDUCTORS

- These are high power SMD inductors and superior to high saturation.
- Tape and Reel package.
- Operating Temperature : -30°C~+100°C
- (Contain Heating Coil)Over 100MΩ at 100VD.C. between coil and core.
- No dielectric breakdown at 100VD.C. for 1 minute between coil and core.

## ELECTRICAL SPECIFICATION @25°C

UMEC MODEL NUMBER	MARK	INDUCTANCE(μH)	D.C.R(Ω) MAX.	RATING CURRENT(A)
<b>LS43 TYPE</b>				
LS43-1R0	1R0	1.0±20%	0.049	2.56
LS43-1R4	1R4	1.4±20%	0.056	2.52
LS43-1R8	1R8	1.8±20%	0.064	1.95
LS43-2R2	2R2	2.2±20%	0.071	1.75
LS43-2R7	2R7	2.7±20%	0.079	1.58
LS43-3R3	3R3	3.3±20%	0.086	1.44
LS43-3R9	3R9	3.9±20%	0.094	1.33
LS43-4R7	4R7	4.7±20%	0.11	1.15
LS43-5R6	5R6	5.6±20%	0.13	0.99
LS43-6R8	6R8	6.8±20%	0.13	0.95
LS43-8R2	8R2	8.2±20%	0.15	0.84
LS43-100	100	10±20%	0.18	1.04
LS43-120	120	12±20%	0.21	0.97
LS43-150	150	15±20%	0.24	0.85
LS43-180	180	18±20%	0.34	0.74
LS43-220	220	22±20%	0.38	0.68
LS43-270	270	27±20%	0.52	0.62
LS43-330	330	33±10%	0.54	0.56
LS43-390	390	39±10%	0.59	0.52
LS43-470	470	47±10%	0.84	0.44
LS43-560	560	56±10%	0.94	0.42
LS43-680	680	68±10%	1.12	0.37
<b>LS54 TYPE</b>				
LS54-100	100	10±20%	0.10	1.44
LS54-120	120	12±20%	0.12	1.40
LS54-150	150	15±20%	0.14	1.30
LS54-180	180	18±20%	0.15	1.23
LS54-220	220	22±20%	0.18	1.11
LS54-270	270	27±20%	0.20	0.97
LS54-330	330	33±15%	0.23	0.88
LS54-390	390	39±15%	0.32	0.80
LS54-470	470	47±15%	0.37	0.72
LS54-560	560	56±10%	0.42	0.68
LS54-680	680	68±10%	0.46	0.61
LS54-820	820	82±10%	0.60	0.58
LS54-101	101	100±10%	0.70	0.52
LS54-121	121	120±10%	0.93	0.48
LS54-151	151	150±10%	1.10	0.40
LS54-181	181	180±10%	1.38	0.38
LS54-221	221	220±10%	1.57	0.35

### \*INDUCTANCE & RATING CURRENT

Measuring Frequency: 1.0uH ~ 8.2uH(7.96MHz), 10uH ~ 82uH(2.52MHz)  
100uH ~ 820uH(1KHz)

\*The inductance is 10% lower then its initial value at rating DC current when at Δt=40°C whichever is lower.

(hp 4284A Precision LCR METER & hp 4192A LF IMPEDANCE ANALYZER & hp 42841A BIAS CURRENT SOURCE)

\*D.C.Resistance (hp 34401A MULTIMETER)

\* For RoHS compliant products: a.)The Ordering Code: TG-Model No. ex. TG-LS43-1R0  
b.)Solder : Sn/Ag/Cu c.)Date Code suffix to "G" (xxxxG)



DATA SHEET 02-30 MAR./06  
2 OF 5



UNIVERSAL MICROELECTRONICS CO.,LTD.  
TEL:886-4-23590096 FAX:886-4-23590129

3,27TH RD.,TAICHUNG INDUSTRIAL PARK,  
TAICHUNG,TAIWAN,R.O.C

# SMD POWER INDUCTORS

ELECTRICAL SPECIFICATION @25°C

UMEC MODEL NUMBER	MARK	INDUCTANCE(uH)	D.C.R(W) MAX.	RATING CURRENT(A)
<b>LS73 TYPE</b>				
LS73-100	100	10±20%	0.080	1.44
LS73-120	120	12±20%	0.089	1.39
LS73-150	150	15±20%	0.104	1.24
LS73-180	180	18±20%	0.111	1.12
LS73-220	220	22±20%	0.129	1.07
LS73-270	270	27±20%	0.153	0.94
LS73-330	330	33±20%	0.170	0.85
LS73-390	390	39±20%	0.217	0.74
LS73-470	470	47±20%	0.252	0.68
LS73-560	560	56±10%	0.282	0.64
LS73-680	680	68±10%	0.332	0.59
LS73-820	820	82±10%	0.406	0.54
LS73-101	101	100±10%	0.481	0.51
LS73-121	121	120±10%	0.536	0.49
LS73-151	151	150±10%	0.755	0.40
LS73-181	181	180±10%	1.022	0.36
LS73-221	221	220±10%	1.200	0.31
LS73-271	271	270±10%	1.306	0.29
LS73-331	331	330±10%	1.495	0.28
<b>LS75 TYPE</b>				
LS75-100	100	10±10%	0.07	2.30
LS75-120	120	12±10%	0.08	2.00
LS75-150	150	15±10%	0.09	1.80
LS75-180	180	18±10%	0.10	1.60
LS75-220	220	22±10%	0.11	1.50
LS75-270	270	27±10%	0.12	1.30
LS75-330	330	33±10%	0.13	1.20
LS75-390	390	39±10%	0.16	1.10
LS75-470	470	47±10%	0.18	1.10
LS75-560	560	56±10%	0.24	0.94
LS75-680	680	68±10%	0.28	0.85
LS75-820	820	82±10%	0.37	0.78
LS75-101	101	100±10%	0.43	0.72
LS75-121	121	120±10%	0.47	0.66
LS75-151	151	150±10%	0.64	0.58
LS75-181	181	180±10%	0.71	0.51
LS75-221	221	220±10%	0.96	0.49
LS75-271	271	270±10%	1.11	0.42
LS75-331	331	330±10%	1.26	0.40
LS75-391	391	390±10%	1.77	0.36
LS75-471	471	470±10%	1.96	0.34

**\*INDUCTANCE & RATING CURRENT**

Measuring Frequency: 1.0uH ~ 8.2uH(7.96MHz), 10uH ~ 82uH(2.52MHz)  
100uH ~ 820uH(1KHz)

\*The inductance is 10% lower than its initial value at rating DC current when at  $\Delta t=40^{\circ}\text{C}$  whichever is lower.

(hp 4284A Precision LCR METER & hp 4192A LF IMPEDANCE ANALYZER & hp 42841A BIAS CURRENT SOURCE)

\*D.C.Resistance (hp 34401A MULTIMETER)

\* For RoHS compliant products: a.)The Ordering Code: TG-Model No. ex. TG-LS73-100  
b.)Solder : Sn/Ag/Cu c.)Date Code suffix to "G" (xxxxG)



DATA SHEET 02-30 MAR./06  
3 OF 5



UNIVERSAL MICROELECTRONICS CO.,LTD.  
TEL:886-4-23590096 FAX:886-4-23590129

3,27TH RD.,TAICHUNG INDUSTRIAL PARK,  
TAICHUNG,TAIWAN,R.O.C

# SMD POWER INDUCTORS

## ELECTRICAL SPECIFICATION @25°C

UMEC MODEL NUMBER	MARK	INDUCTANCE(uH)	D.C.R(W) MAX.	RATING CURRENT(A)
LS104 TYPE				
LS104-100	100	10±20%	0.053	2.38
LS104-120	120	12±20%	0.061	2.13
LS104-150	150	15±20%	0.070	1.87
LS104-180	180	18±20%	0.081	1.73
LS104-220	220	22±20%	0.088	1.60
LS104-270	270	27±20%	0.100	1.44
LS104-330	330	33±20%	0.120	1.26
LS104-390	390	39±20%	0.151	1.20
LS104-470	470	47±20%	0.170	1.10
LS104-560	560	56±10%	0.199	1.01
LS104-680	680	68±10%	0.223	0.91
LS104-820	820	82±10%	0.252	0.85
LS104-101	101	100±10%	0.344	0.74
LS104-121	121	120±10%	0.396	0.69
LS104-151	151	150±10%	0.544	0.61
LS104-181	181	180±10%	0.621	0.56
LS104-221	221	220±10%	0.721	0.53
LS104-271	271	270±10%	0.949	0.45
LS104-331	331	330±10%	1.100	0.42
LS104-391	391	390±10%	1.245	0.38
LS104-471	471	470±10%	1.526	0.35
LS104-561	561	560±10%	1.904	0.32

### \*INDUCTANCE & RATING CURRENT

Measuring Frequency: 1.0uH ~ 8.2uH(7.96MHz), 10uH ~ 82uH(2.52MHz)  
100uH ~ 820uH(1KHz)

\*The inductance is 10% lower then its initial value at rating DC current when at  $\Delta t=40^{\circ}\text{C}$  whichever is lower.  
(hp 4284A Precision LCR METER & hp 4192A LF IMPEDANCE ANALYZER & hp 42841A BIAS CURRENT SOURCE)

\*D.C.Resistance (hp 34401A MULTIMETER)

\* For RoHS compliant products: a.)The Ordering Code: TG-Model No. ex. TG-LS104-100  
b.)Solder : Sn/Ag/Cu c.)Date Code suffix to "G" (xxxxG)



DATA SHEET 02-30 MAR./06  
4 OF 5



UNIVERSAL MICROELECTRONICS CO.,LTD.  
TEL:886-4-23590096 FAX:886-4-23590129

3,27TH RD.,TAICHUNG INDUSTRIAL PARK,  
TAICHUNG,TAIWAN,R.O.C

# SMD POWER INDUCTORS

## ELECTRICAL SPECIFICATION @25°C

UMEC MODEL NUMBER	MARK	INDUCTANCE(uH)	D.C.R(W) MAX.	RATING CURRENT(A)
<b>LS105 TYPE</b>				
LS105-100	100	10±20%	0.06	2.60
LS105-120	120	12±20%	0.07	2.45
LS105-150	150	15±20%	0.08	2.27
LS105-180	180	18±20%	0.09	2.15
LS105-220	220	22±20%	0.10	1.95
LS105-270	270	27±20%	0.11	1.76
LS105-330	330	33±20%	0.12	1.50
LS105-390	390	39±20%	0.14	1.37
LS105-470	470	47±10%	0.17	1.28
LS105-560	560	56±10%	0.19	1.17
LS105-680	680	68±10%	0.22	1.11
LS105-820	820	82±10%	0.25	1.00
LS105-101	101	100±10%	0.35	0.97
LS105-121	121	120±10%	0.40	0.89
LS105-151	151	150±10%	0.47	0.78
LS105-181	181	180±10%	0.63	0.72
LS105-221	221	220±10%	0.73	0.66
LS105-271	271	270±10%	0.97	0.57
LS105-331	331	330±10%	1.15	0.52
LS105-391	391	390±10%	1.30	0.48
LS105-471	471	470±10%	1.48	0.42
LS105-561	561	560±10%	1.90	0.33
LS105-681	681	680±10%	2.25	0.28
LS105-821	821	820±10%	2.55	0.24

**\*INDUCTANCE & RATING CURRENT**

Measuring Frequency: 1.0uH ~ 8.2uH(7.96MHz), 10uH ~ 82uH(2.52MHz)  
100uH ~ 820uH(1KHz)

\*The inductance is 10% lower then its initial value at rating DC current when at  $\Delta t=40^{\circ}\text{C}$  whichever is lower.

(hp 4284A Precision LCR METER & hp 4192A LF IMPEDANCE ANALYZER & hp 42841A BIAS CURRENT SOURCE)

\*D.C.Resistance (hp 34401A MULTIMETER)

\* For RoHS compliant products: a.)The Ordering Code: TG-Model No. ex. TG-LS105-100  
b.)Solder : Sn/Ag/Cu c.)Date Code suffix to "G" (xxxxG)



DATA SHEET 02-30 MAR./06  
5 OF 5



UNIVERSAL MICROELECTRONICS CO.,LTD.  
TEL:886-4-23590096 FAX:886-4-23590129

3,27TH RD.,TAICHUNG INDUSTRIAL PARK,  
TAICHUNG,TAIWAN,R.O.C