

MODEM COUPLING TRANSFORMERS

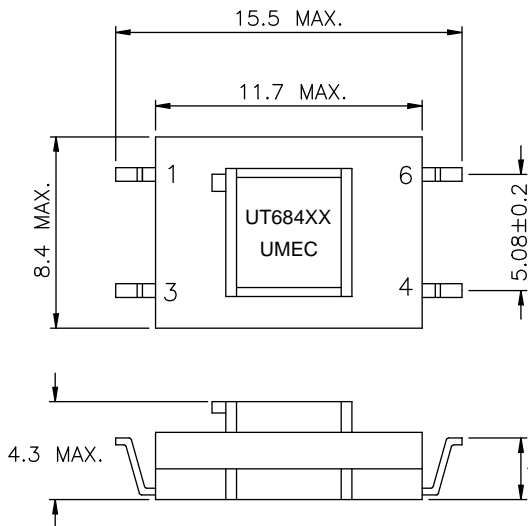
Designed for PCMCIA type II cards

- Compatible with 56kb/s technologies
- Low Harmonic Distortion
- Flat Frequency / Phase Response

ELECTRICAL SPECIFICATIONS @ 25°C

SPECIFICATIONS		UT68408 / UT68409 / UT68412	UT68443A / UT68443B / UT68443
Reflects 600ohms at PRI with RL=		301Ω	290Ω
Turns Ratio (PRI.:SEC.)		1:1±2%	1:1±2%
D.C.Current in Pri.		none	none
Dielectric Test		1250Vac	1250Vac
Agency Approvals:		—	—
D.C.Resistance	PRI.	150Ω±10%	141Ω±10%
	SEC.	150Ω±10%	171Ω±10%
Insertion Loss	@ 1KHz 0dBm.	3.3dB max.	3.5dB max.
Frequency Response	@ 300Hz to 3.5KHz , ref 1KHz	±0.15dB	±0.1dB
Return Loss *	@ 300Hz to 3.5KHz	24dB min.	30dB min.
Total Harmonic Distortion	@ 600Hz, -10dBm.	-80dB max.	-85dB typ.
Longitudinal Balance	@ 60Hz to 1KHz	—	60dB min.
	@ 200Hz to 1KHz	60dB min.	—
	@ 1KHz to 4KHz	40dB min.	60dB min.

SCHEMATIC & DIMENSION : (UNIT : mm)

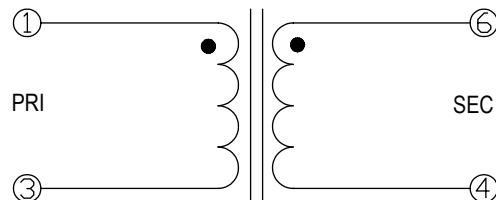


* See Terminal Offset Table

Terminal Offset

UM Model No.	UT68408	UT68409	UT68412
Terminal Offset	-0.3mm	1.4mm	2.4mm

UM Model No.	UT68443A	UT68443B	UT68443
Terminal Offset	-0.3mm	1.4mm	2.4mm



UT68408	UT68443A
UT68409	UT68443B
UT68412	UT68443



UNIVERSAL MICROELECTRONICS CO.,LTD.
TEL:886-4-23590096 FAX:886-4-23590129

3,27TH RD.,TAICHUNG INDUSTRIAL PARK,
TAICHUNG,TAIWAN,R.O.C

DATA SHEET 02-68 JUL./04

1 OF 3

MODEM COUPLING TRANSFORMERS

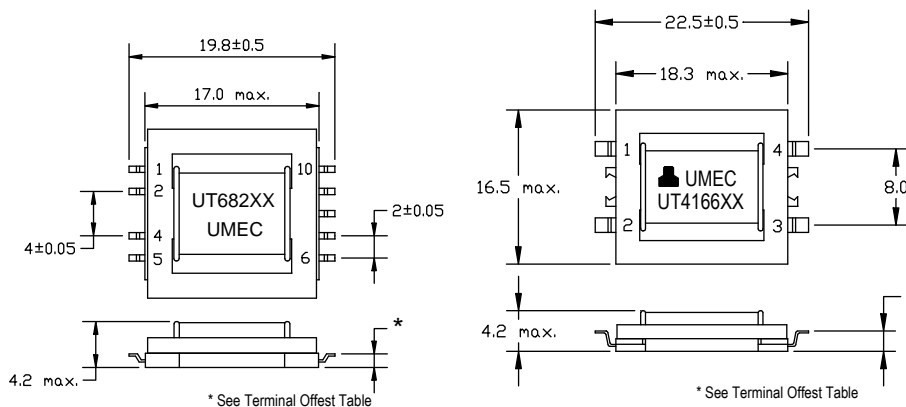
Designed for PCMCIA type II cards

- Compatible with 56kb/s technologies
- Low Harmonic Distortion.
- Flat Frequency / Phase Response

ELECTRICAL SPECIFICATIONS @ 25°C

SPECIFICATIONS		UT68274A / UT68284	UT41660 / UT41660A / UT41660C
Reflects 600ohms at PRI with RL=		301Ω	301Ω
Turns Ratio (PRI.:SEC.)		1:1±2%	1:1±2%
D.C.Current in Pri.		none	None
Dielectric Test		1250Vac	1250Vac
Agency Approvals:		—	—
D.C.Resistance	PRI.	160Ω±10%	150Ω±10%
	SEC.	145Ω±10%	150Ω±10%
Insertion Loss	@ 1KHz 0dBm.	3.15±0.1dB	3.0±0.21dB
Frequency Response	@ 70Hz to 20KHz , ref 1KHz	—	±0.2dB
	@ 200Hz to 10KHz , ref 1KHz	—	±0.1dB
	@ 300Hz to 4KHz , ref 1KHz	±0.1dB	—
Return Loss *	@ 70Hz to 10KHz	—	25dB min.
	@ 200Hz to 4KHz	—	30dB min.
	@ 300Hz	34dB min.	—
	@ 1KHz	40dB min.	—
	@ 4KHz	34dB min.	—
Total Harmonic Distortion	@ 150Hz, -3dBm.	—	-71dB max.
	@ 600Hz, -10dBm.	-83dB max.	-86dB max.
Longitudinal Balance	@ 200Hz to 1KHz	65dB min.	65dB min.
	@ 1KHz to 4KHz	65dB min.	65dB min.

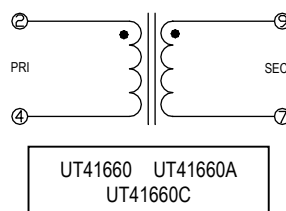
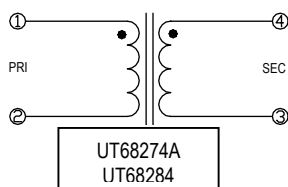
SCHEMATIC & DIMENSION : (UNIT : mm)



Terminal Offset

UM Model No.	UT68274A	UT68284
Terminal Offset	1.3mm	-0.1mm

UM Model No.	UT41660	UT41660A	UT41660C
Terminal Offset	1.4mm	-0.1mm	2.4mm



DATA SHEET 02-68 JUL./04

2 OF 3

UNIVERSAL MICROELECTRONICS CO.,LTD.
TEL:886-4-23590096 FAX:886-4-23590129

3,27TH RD.,TAICHUNG INDUSTRIAL PARK,
TAICHUNG,TAIWAN,R.O.C

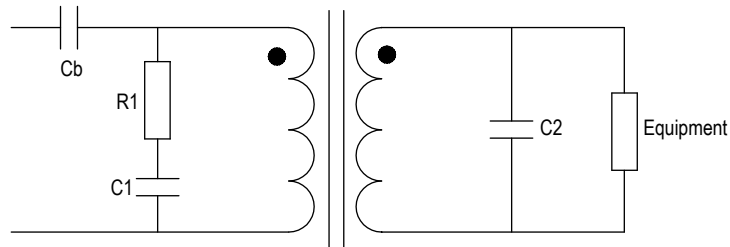
MODEM COUPLING TRANSFORMERS

Designed for PCMCIA type II cards

RETURN LOSS TEST CIRCUITS

600ΩMATCH

Recommended Circuit Description:



UM Model No.	Ref. Impedance Values	Recommended Circuit Values				
		Cb (uF)	R1 (Ω)	C1 (nF)	C2 (nF)	Equipment (Ω)
UT41660	600Ω	22 uF	—	—	—	301Ω
UT41660A	600Ω	22 uF	—	—	—	301Ω
UT41660C	600Ω	22 uF	—	—	—	301Ω
UT68274A	600Ω	—	—	—	—	301Ω
UT68284	600Ω	—	—	—	—	301Ω
UT68408	600Ω	—	—	—	—	301Ω
UT68409	600Ω	—	—	—	—	301Ω
UT68412	600Ω	—	—	—	—	301Ω
UT68443	600Ω	—	—	—	—	290Ω
UT68443A	600Ω	—	—	—	—	290Ω
UT68443B	600Ω	—	—	—	—	290Ω

*Specifications are subject to change without prior notice.

