

SMD POWER INDUCTORS

SRS728,730,732,745,1045 Series

- These series are characterized by low profile, low DC resistance, and high current handling capacities.
- Because they are magnetically shielded, these parts can be used in high-density mounting configurations.
- Flat bottom surface ensures secure, reliable mounting.
- Provided in embossed carrier tape packaging for use with automatic mounting machines.
- Operating temperature range: -40°C to +85°C.

ELECTRICAL SPECIFICATIONS @25°C

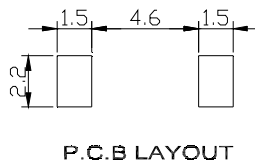
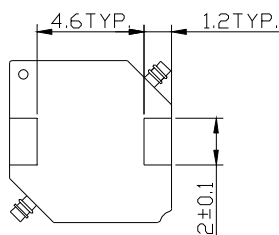
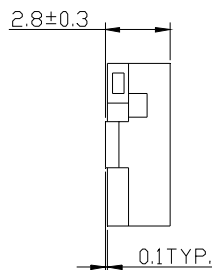
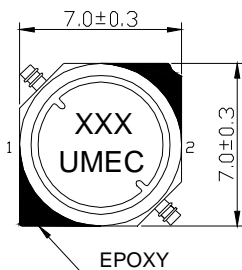
UMEC MODEL NUMBER	MARK	$L \pm 20\%^{1}$ (μH)	DCR(Ω) Max.	Isat ² (A)
SRS728-3R3	3R3	3.3	0.044	1.6
SRS728-4R7	4R7	4.7	0.054	1.5
SRS728-6R8	6R8	6.8	0.071	1.3
SRS728-100	100	10	0.100	1.1
SRS728-150	150	15	0.156	0.88
SRS728-220	220	22	0.216	0.75
SRS728-330	330	33	0.288	0.65
SRS728-470	470	47	0.408	0.54

1. Inductance tested at 1KHz, 0.5V, L_s

2. Inductance drop 10% max. at Isat.

3. For RoHS compliant products: a.) The Ordering Code: TG-Model No. ex. TG-SRS728-3R3
b.) Solder : Sn/Ag/Cu c.) Date Code suffix to "G" (xxxxG)

DIMENSION & DRAWING



DATA SHEET 11-30 MAR./06
1 OF 5



UNIVERSAL MICROELECTRONICS CO.,LTD.
TEL:886-4-23590096 FAX:886-4-23590129

3,27TH RD.,TAICHUNG INDUSTRIAL PARK,
TAICHUNG,TAIWAN,R.O.C

SMD POWER INDUCTORS

SRS728,730,732,745,1045 Series

ELECTRICAL SPECIFICATIONS @25°C

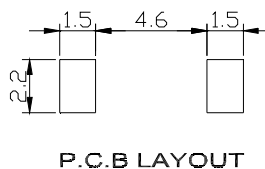
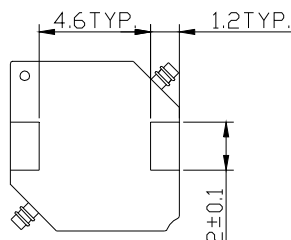
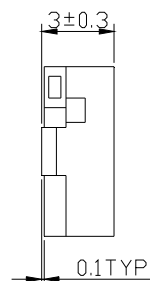
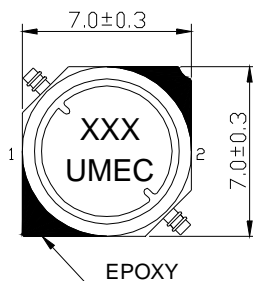
UMEC MODEL NUMBER	MARK	$L \pm 20\%^{1}$ (μH)	DCR(Ω) Max.	Isat ² (A)
SRS730-3R3	3R3	3.3	0.028	1.8
SRS730-4R7	4R7	4.7	0.043	1.6
SRS730-6R8	6R8	6.8	0.049	1.5
SRS730-100	100	10	0.064	1.3
SRS730-150	150	15	0.101	1
SRS730-220	220	22	0.132	0.86
SRS730-330	330	33	0.192	0.65
SRS730-470	470	47	0.288	0.57
SRS730-680	680	68	0.372	0.49
SRS730-101	101	100	0.54	0.35

1. Inductance tested at 1KHz, 0.5V, L_S

2. Inductance drop 10% max. at Isat.

3. For RoHS compliant products: a.) The Ordering Code: TG-Model No. ex. TG-SRS730-3R3
b.) Solder : Sn/Ag/Cu c.) Date Code suffix to "G" (xxxxG)

DIMENSION & DRAWING



UNIVERSAL MICROELECTRONICS CO.,LTD.
TEL:886-4-23590096 FAX:886-4-23590129

3,27TH RD.,TAICHUNG INDUSTRIAL PARK,
TAICHUNG,TAIWAN,R.O.C

DATA SHEET 11-30 MAR./06
2 OF 5

SMD POWER INDUCTORS

SRS728,730,732,745,1045 Series

ELECTRICAL SPECIFICATIONS @25°C

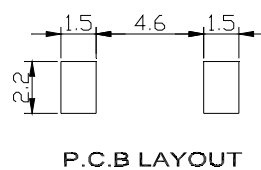
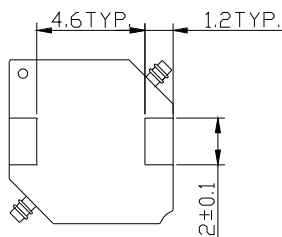
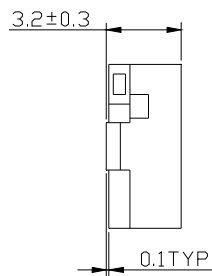
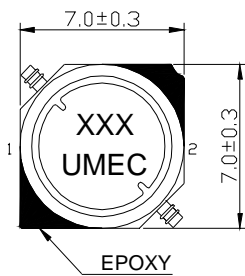
UMEC MODEL NUMBER	MARK	$L \pm 20\%^{1}$ (μH)	DCR(Ω) Max.	Isat ² (A)
SRS732-3R3	3R3	3.3	0.028	1.9
SRS732-4R7	4R7	4.7	0.043	1.7
SRS732-6R8	6R8	6.8	0.049	1.6
SRS732-100	100	10	0.064	1.4
SRS732-150	150	15	0.09	1.1
SRS732-220	220	22	0.132	0.96
SRS732-330	330	33	0.192	0.75
SRS732-470	470	47	0.288	0.67
SRS732-680	680	68	0.372	0.59
SRS732-101	101	100	0.54	0.45
SRS732-151	151	150	0.78	0.37
SRS732-221	221	220	1.26	0.29
SRS732-331	331	330	2.00	0.22
SRS732-471	471	470	2.46	0.2
SRS732-681	681	680	3.78	0.16
SRS732-102	102	1000	5.736	0.13

1. Inductance tested at 1KHz, 0.5V, L_s

2. Inductance drop 10% max. at Isat .

3. For RoHS compliant products: a.) The Ordering Code: TG-Model No. ex. TG-SRS732-3R3
 b.) Solder : Sn/Ag/Cu c.) Date Code suffix to "G" (xxxxG)

DIMENSION & DRAWING



DATA SHEET 11-30 MAR./06
3 OF 5



UNIVERSAL MICROELECTRONICS CO.,LTD.
TEL:886-4-23590096 FAX:886-4-23590129

3,27TH RD.,TAICHUNG INDUSTRIAL PARK,
TAICHUNG,TAIWAN,R.O.C

SMD POWER INDUCTORS

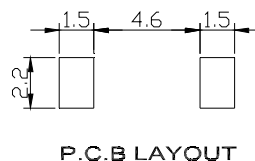
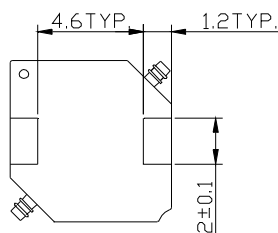
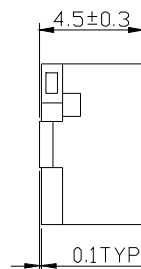
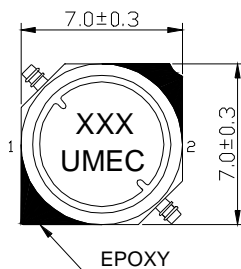
SRS728,730,732,745,1045 Series

ELECTRICAL SPECIFICATIONS @25°C

UMEC MODEL NUMBER	MARK	$L \pm 20\%^{1}$ (μH)	DCR(Ω) Max.	I_{sat}^2 (A)	I_{rat}^2 (A)
SRS745-3R3	3R3	3.3	0.024	2.5	2.3
SRS745-4R7	4R7	4.7	0.036	2	2.1
SRS745-6R8	6R8	6.8	0.047	1.7	1.74
SRS745-100	100	10	0.055	1.3	1.78
SRS745-150	150	15	0.063	1.1	1.53
SRS745-220	220	22	0.073	0.9	1.34
SRS745-330	330	33	0.115	0.82	1.09
SRS745-470	470	47	0.15	0.75	0.92
SRS745-680	680	68	0.21	0.6	0.77
SRS745-101	101	100	0.3	0.5	0.65
SRS745-151	151	150	0.41	0.4	0.55
SRS745-221	221	220	0.63	0.33	0.45
SRS745-331	331	330	0.89	0.25	0.37
SRS745-471	471	470	1.26	0.22	0.31
SRS745-681	681	680	1.78	0.2	0.27
SRS745-102	102	1000	2.74	0.14	0.25

- Inductance tested at 1KHz, 0.5V, L_s
- Inductance drop 10% max. at I_{sat} and temperature rise 20°C at I_{rat} .
- For RoHS compliant products: a.)The Ordering Code: TG-Model No. ex. TG-SRS745-3R3
b.)Solder : Sn/Ag/Cu c.)Date Code suffix to "G" (xxxxG)

DIMENSION & DRAWING



DATA SHEET 11-30 MAR./06
4 OF 5



UNIVERSAL MICROELECTRONICS CO.,LTD.
TEL:886-4-23590096 FAX:886-4-23590129

3,27TH RD.,TAICHUNG INDUSTRIAL PARK,
TAICHUNG,TAIWAN,R.O.C

SMD POWER INDUCTORS

SRS728,730,732,745,1045 Series

ELECTRICAL SPECIFICATIONS @25°C

UMEC MODEL NUMBER	MARK	$L \pm 20\%^{1}$ (μH)	DCR(Ω) Max.	Isat ² (A)
SRS1045-100	100	10	0.044	3
SRS1045-150	150	15	0.056	2.4
SRS1045-220	220	22	0.070	2.1
SRS1045-330	330	33	0.097	1.6
SRS1045-470	470	47	0.12	1.4
SRS1045-680	680	68	0.16	1.2
SRS1045-101	101	100	0.24	1
SRS1045-151	151	150	0.42	0.79
SRS1045-221	221	220	0.56	0.65
SRS1045-331	331	330	0.82	0.54
SRS1045-471	471	470	1.23	0.47
SRS1045-681	681	680	1.92	0.38
SRS1045-102	102	1000	3.36	0.32
SRS1045-152	152	1500	4.10	0.22

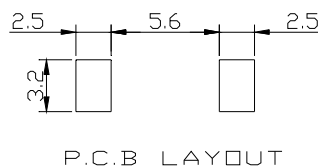
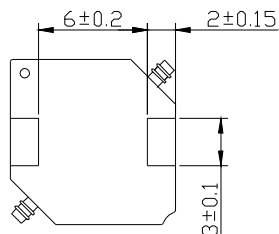
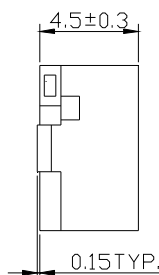
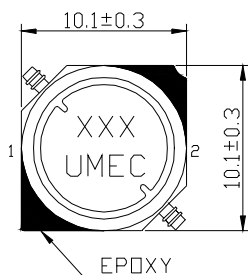
1. Inductance tested at 1KHz, 0.5V, L_s

2. Inductance drop 10% max. at Isat .

3. For RoHS compliant products: a.) The Ordering Code: TG-Model No. ex. TG-SRS1045-100

b.) Solder : Sn/Ag/Cu c.) Date Code suffix to "G" (xxxxG)

DIMENSION & DRAWING



*Specifications are subject to change without prior notice.

DATA SHEET 11-30 MAR./06

5 OF 5



UNIVERSAL MICROELECTRONICS CO.,LTD.
TEL:886-4-23590096 FAX:886-4-23590129

3,27TH RD.,TAICHUNG INDUSTRIAL PARK,
TAICHUNG,TAIWAN,R.O.C