

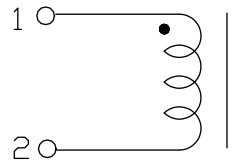
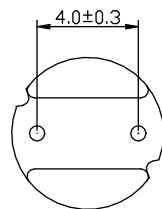
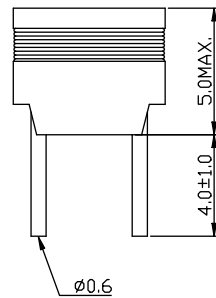
DATA SHEET

UM PART NO.:	SPECIFICATION	REV.	
RCH65-220	INDUCTOR	A0	02/04

ELECTRICAL SPECIFICATION AT 25 °C

1. INDUCTANCE : 22uH±20% AT 100KHz , 1V , Ls , PIN(1-2).
2. INDUCTANCE : DOWN10% MAX. AT 100KHz , 1V , BIAS 0.9Adc , Ls , PIN(1-2)
3. INDUCTANCE : 22uH±20% AT 1MHz , 1V , Ls , PIN(1-2).
4. INDUCTANCE : 22uH±20% AT 2.52MHz , 1V , Ls , PIN(1-2).
5. D.C.Resistance : 180mΩ MAX. PIN(1-2).

DIMENSIONS & SCHEMATICS



Note: Specifications are subject to change without prior notice.

UNIT : mm

E10-007-B