

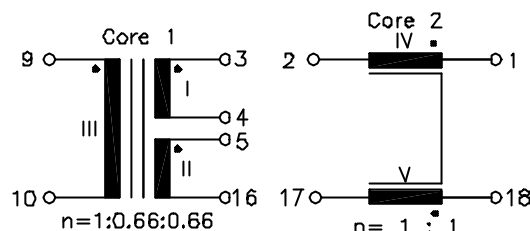
# ISDN

UM MODEL NO.:	SPECIFICATION	REV.	
UT21619	U <sub>KO</sub> -Interface Module	B2	06/01

### Characteristic data:

$f=60\text{KHz}$   
 $R_I=R_{II} \approx 2.7\Omega$   
 $R_{III} \approx 4.0\Omega$   
 $R_{IV}=R_V \approx 1.2\Omega$   
 $I_{dc}=60\text{mA}$   
 $T_u(\text{amb}) \leq 60^\circ\text{C}$

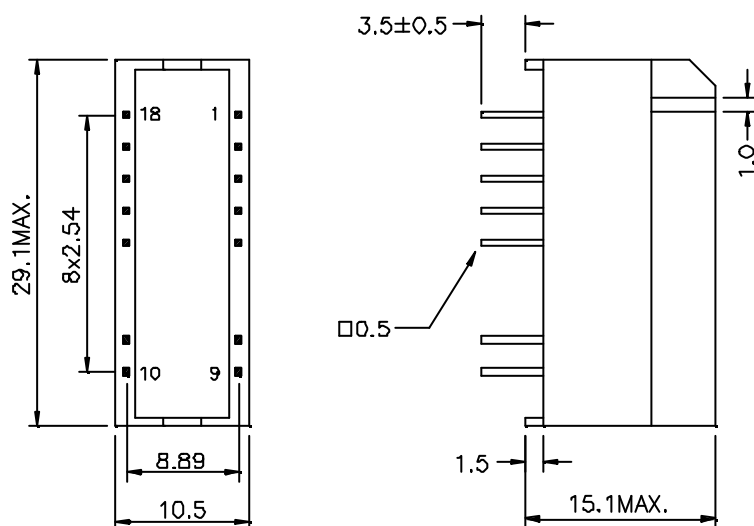
### Schematic diagram:



### Electrical Specification at 25<sup>0</sup>C:

- LI+II=6.35mH +12%/-12%,(NI+II series), at 10KHz 100mV with I<sub>dc</sub>=60mA(core 1)
- Polarity and turns ratio tolerance: ±2%(core 1)
- Polarity and turns ratio tolerance: ±1%(core 2)
- C<sub>k</sub>≤150pF,(NIII to NI || NII), at 10KHz 100mV(core 1)
- L<sub>s</sub> I+II≤9.0uH,(NI+II series, NIII shorted), at 100KHz 100mV(core 1)
- L<sub>s</sub> IV≤0.8uH,(NV shorted), at 100KHz 100mV(core 2)
- LIV=LV=58mH +50%/-30%, at 10KHz 100mV(core 2)
- HI-pot test:  
 U<sub>p</sub>=2.0KV<sub>rms</sub>,2s [ NIII to NI+NII,(core 1) ]  
 U<sub>p</sub>=0.5KV<sub>rms</sub>,2s [ NI to NII and NIV to NV,(core 1,2) ]

### Dimension:



NOTE : 1. For RoHS compliant products:

- The UMEC ordering code: **TG-UT21619**
- Date Code suffix to "G" (xxxxG).
- Solder : Sn/ Cu .

2. Specifications are subject to change without prior notice.

UNIT: mm

Tolerances: ±0.2mm



**UNIVERSAL MICROELECTRONICS CO.,LTD.**  
 TEL:886-4-23590096 FAX:886-4-23590129  
<http://www.umec-web.com> Email:business@umec.com.tw

3,27TH RD.,TAICHUNG INDUSTRIAL PARK,  
 TAICHUNG,TAIWAN,R.O.C

E10-013-C