

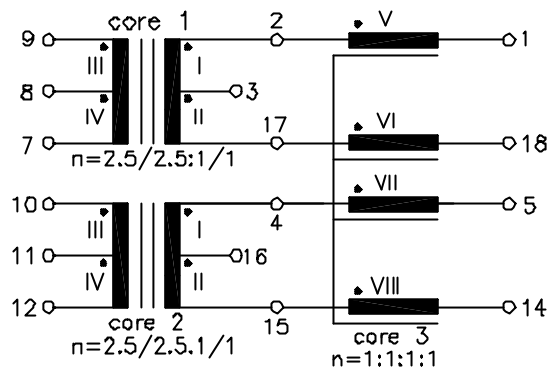
# ISDN

UM MODEL NO.:	SPECIFICATION	REV.	
UT21626	S <sub>O</sub> -Interface Module	A1	98/47

### Characteristic data:

- f=96KHz
- C<sub>w</sub> I+II ≈ 250pF
- R<sub>I</sub>=R<sub>II</sub> ≈ 0.8Ω
- R<sub>III</sub>=R<sub>IV</sub> ≈ 3.0Ω
- R<sub>V</sub> ~ R<sub>VIII</sub> ≈ 1.1Ω
- ΔI<sub>dc</sub>=5mA
- T<sub>u</sub>(amb)≤60°C

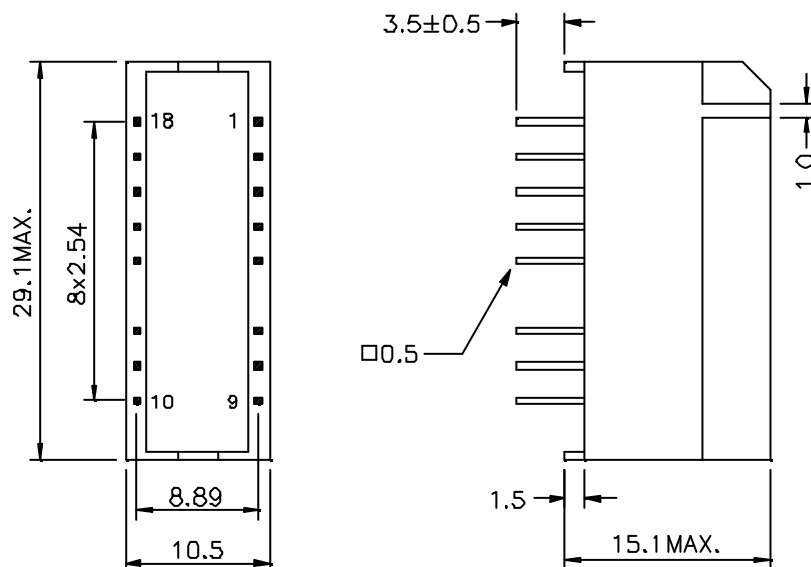
### Schematic diagram:



### Electrical Specification at 25°C:

- 1.) L<sub>I+II</sub> ≥ 30mH, (N<sub>I+II</sub> series), at 10KHz 100mV (core 1,2)
- 2.) Polarity and turns ratio tolerance ±1% (core 1,2,3)
- 3.) C<sub>k</sub> ≤ 150pF, (N<sub>III+IV</sub> to N<sub>I+V</sub> || N<sub>II+VI</sub>, or N<sub>I+VII</sub> || N<sub>II+VIII</sub>), at 10KHz 100mV (core 1,2)
- 4.) L<sub>s</sub> I+II ≤ 5.0uH, (N<sub>I+II</sub> series, N<sub>III+IV</sub> shorted), at 100KHz 100mV (core 1,2)
- 5.) L<sub>s</sub> V ≤ 0.6uH, (N<sub>VI</sub>, N<sub>VII</sub>, N<sub>VIII</sub> shorted), at 100KHz 100mV (core 3)
- 6.) L<sub>V</sub>=L<sub>VI</sub>=L<sub>VII</sub>=L<sub>VIII</sub>=5.0mH +50%/-30%, at 10KHz, 100mV (core 3)
- 7.) Z<sub>I</sub>=Z<sub>II</sub> ≥ 625Ω, at 20KHz 100mV with ΔI<sub>dc</sub>=5mA (core 1,2)
- 8.) HI-pot test:
  - U<sub>p</sub>=1.5KVrms, 2s [ N<sub>I/II</sub>(core 1+core 2) to N<sub>III/IV</sub>(core 1+core 2) ]
  - U<sub>p</sub>=0.5KVrms, 2s [ N<sub>V+VI</sub>(core 3)+N<sub>III/IV</sub>(core 1) to (N<sub>VII+VIII</sub>(core 3)+N<sub>III/IV</sub>(core 2) ]

### Dimension:



NOTE: Specifications are subject to change without prior notice.

UNIT: mm

Tolerances ±0.2mm



UNIVERSAL MICROELECTRONICS CO.,LTD.  
 TEL:886-4-23590096 FAX:886-4-23590129  
<http://www.umec-web.com> Email:business@umec.com.tw

3,27TH RD.,TAICHUNG INDUSTRIAL PARK,  
 TAICHUNG,TAIWAN,R.O.C

E10-013-C