

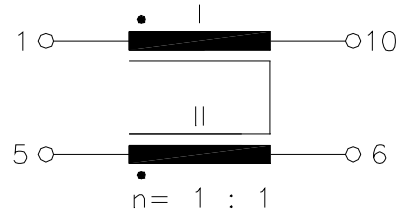
ISDN

UM MODEL NO.:	SPECIFICATION	REV.	
UT28107	2-Fold Common Mode Choke	A1	99/05

Characteristic data:

$R_I = R_{II} \approx 0.25\Omega$
 $I_n = 600\text{mA}$
 $T_u(\text{amb}) \leq 60^\circ\text{C}$

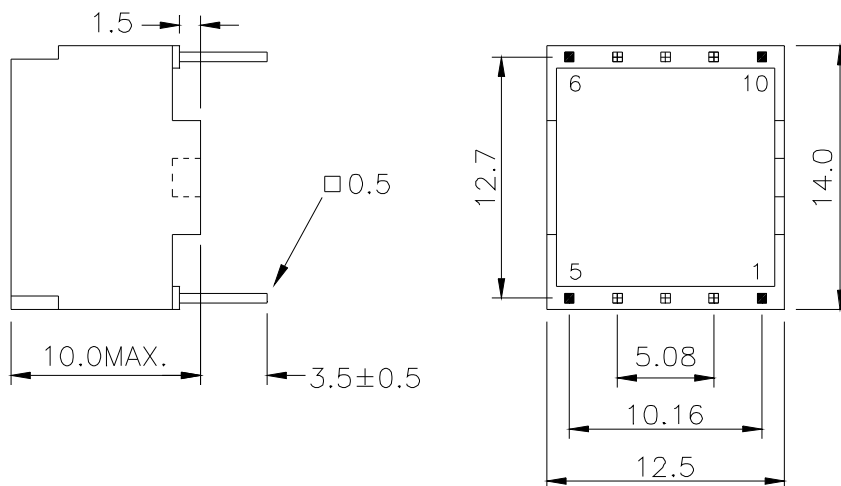
Schematic diagram:



Electrical Specification at 25⁰C:

- 1.) $L = 1.7\text{mH} +50\%/-30\%$, at 10KHz 100mV
- 2.) Polarity and turns ratio tolerance: $\pm 1\%$
- 3.) $L_s \leq 2.0\mu\text{H}$, (NII shorted), at 100KHz 100mV
- 4.) HI-pot test:
 $U_p = 1.0\text{KVrms}, 3\text{s}$ (Winding to Winding)

Dimension:



NOTE: Specifications are subject to change without prior notice.

UNIT: mm

Tolerances: $\pm 0.2\text{mm}$

E10-013-C



UNIVERSAL MICROELECTRONICS CO.,LTD.
 TEL:886-4-23590096 FAX:886-4-23590129
<http://www.umec-web.com> E-mail:business@umec.com.tw

3,27TH RD.,TAICHUNG INDUSTRIAL PARK,
 TAICHUNG,TAIWAN,R.O.C