

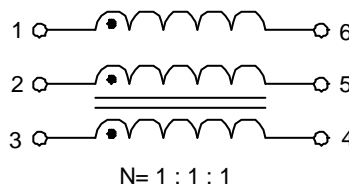
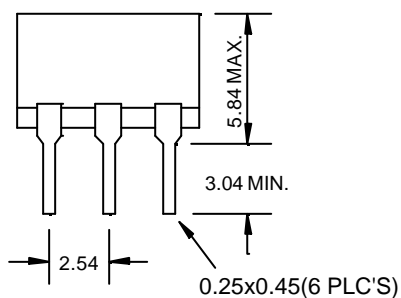
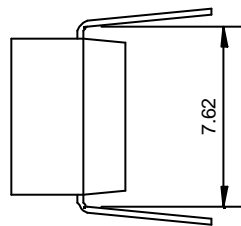
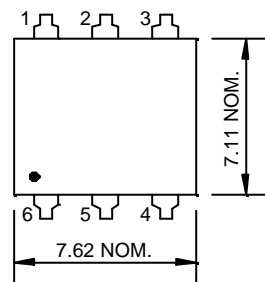
DATA SHEET

| | | | |
|---------------|-------------------|------|-------|
| UM MODEL NO.: | SPECIFICATION | REV. | |
| UT34143 | Common Mode Choke | A1 | 05/45 |

Electrical Specification at 25⁰C :

- 1.) Inductance: 25uH Min. at 100KHz 20mV
- 2.) Polarity And Turns Ratio Tolerance±1%
- 3.) $L_L \leq 0.2\mu\text{H}$, (NII ,III shorted), at 100KHz 1V
- 4.) $C_w/w \leq 10\text{pF}$, (NI to NII) , at 100KHz 1V
- 5.) D.C.R $\leq 0.25\Omega$, each windings
- 6.) HI-POT test:
Up=100Vrms,2s(winding to winding)

Dimension & Schematic:



- NOTE : 1. For RoHS compliant products:
- a.) The UMEC ordering code: **TG-UT34143**
 - b.) Date Code suffix to "G" (xxxxG).
 - c.) Solder : Sn/Cu .
2. Specifications are subject to change without prior notice.

UNIT : mm

E10-007-C



UNIVERSAL MICROELECTRONICS CO.,LTD.
TEL:886-4-23590096 FAX:886-4-23590129
<http://www.umec-web.com> Email:business@umec.com.tw

3,27TH RD.,TAICHUNG INDUSTRIAL PARK,
TAICHUNG,TAIWAN,R.O.C