

Voice/Data Coupling Transformer – UT41674

ELECTRICAL SPECIFICATIONS AT 25°C :

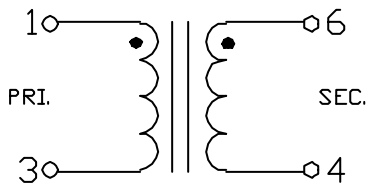
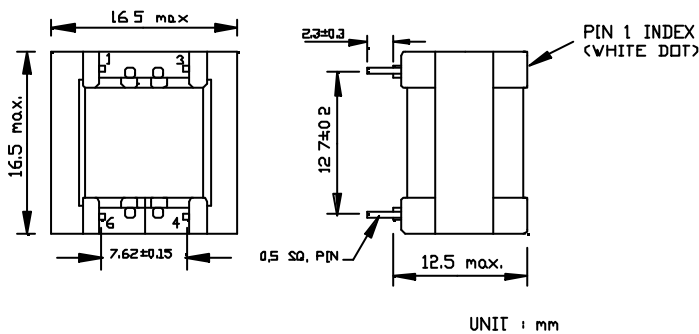
- *Impedance : Designed to reflect 600ohms on PRI. with 600ohms on SEC.
- *Turns Ratio : 1:1.1 ±2%
- *D.C.Current in PRI. : None.
- *D.C.Resistance : PRI.: 62.5ohms ± 10%
SEC.: 84.5ohms ± 10%
- *Dielectric Test : 1.5KVac 0.5mA 1min., PRI. to SEC.
- *Insertion Loss : 1.3dB Ref. at 1KHz 0dBm
- *Frequency Response : ±0.25dB, @ 300Hz to 3.5KHz, ref 1KHz.
- *Total Harmonic Distortion : -74dB Typ. , @ 300Hz , 0dBm .
- *Return Loss : 25dB Min. , @ 300Hz
- *Echo Return Loss : 28dB Min.
- *Longitudinal Balance : 60dB Min. , @ 300Hz
40dB Min. , @ 4KHz

NOTE :1. For RoHS compliant products:

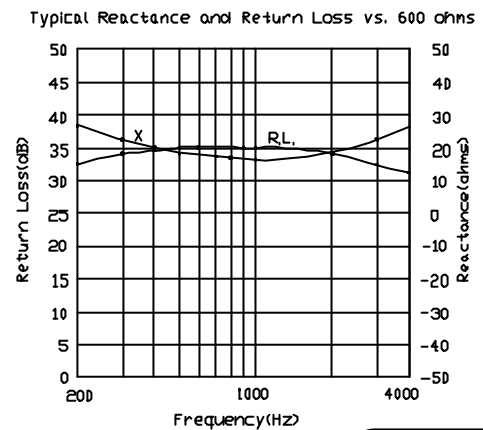
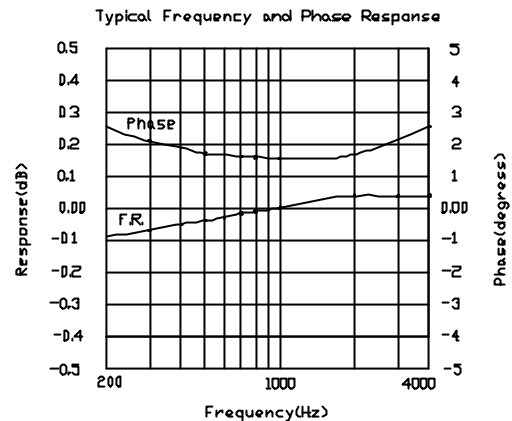
- a.) UMEC Ordering Code: **TG-UT41674**
- b.) Date Code suffix to "G" (xxxxG).
- c.) Solder: Sn/ Cu.

2. Specifications are subject to change without prior notice.

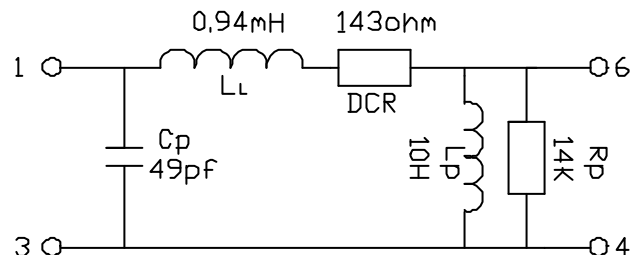
SCHEMATIC DIAGRAMS & DIMENSIONS :



TYPICAL GRAPHS :



SPICE TRANSMISSION MODEL



**UNIVERSAL
MICROELECTRONICS**

<http://www.umec-web.com> Email: business@umec.com.tw

3,27TH RD., TAICHUNG INDUSTRIAL PARK,
TAICHUNG, TAIWAN, R.O.C.
TEL : 886-4-23590096 FAX : 886-4-23590129

REV. A2 SEP , 2006