

ADSL/POTS

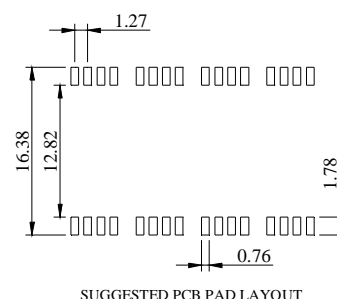
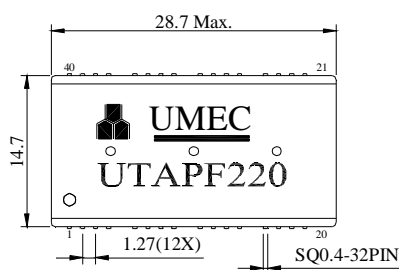
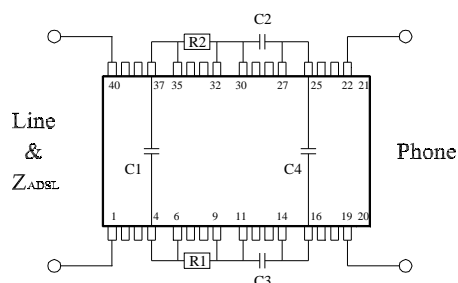
UM MODEL NO.:	SPECIFICATIONS	REV.	
UTAPF220	ADSL POTS CO Filter Choke	A0	2004/41

Electrical specification at 25°C:

- 1.) Impedance (Z_R) : $270\Omega + (750\Omega // 150nF)$.
- 2.) Total D.C.R. : 50Ω max. , PIN(1-40),PIN(19-22)connected .
- 3.) Insertion Loss : $1.0dB$ max. ,at $1K$ Hz ,Line to Phone , Line with Z_{ADSL} .
- 4.) Pass Band Ripple : $\pm 1.0dB$ max. , $100Hz$ to $4000Hz$, $1KHz$ $0dB$ ref,Line to Phone , Line with Z_{ADSL} .
- 5.) Attenuation : $55dB$ min. , $32KHz$ to $1.1MHz$, Line to Phone , Line with Z_{ADSL} .
- 6.) Return Loss. : $12dB$ min. , $100Hz$ to $3400Hz$, Line to Phone , Line with Z_{ADSL} , Phone with Z_R .
: $8dB$ min. , $3400Hz$ to $4000Hz$, Line to Phone , Line with Z_{ADSL} , Phone with Z_R .
- 7.) Longitudinal Balance : $40dB$ min. , $100Hz$ to $600Hz$, Line to Phone.
: $46dB$ min. , $600Hz$ to $3200Hz$, Line to Phone.
: $40dB$ min. , $3200Hz$ to $4000Hz$, Line to Phone.
- 8.) Group Delay : $250\mu Sec$ max. , $100Hz$ to $4000Hz$.
- 9.) Line Side Impedance : $1.0K\Omega$ max. , $40KHz$ to $1.1MHz$,PIN(1-40) .

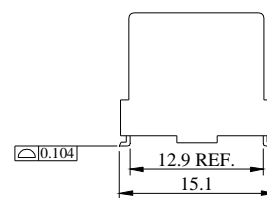
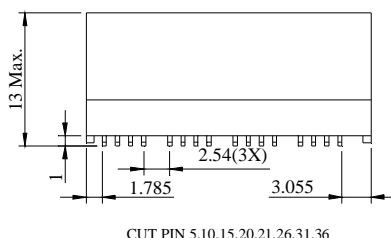
Note: Designed to meet ETSI specification TS101-952-1-1 & TR 101 728-V1.2.1.

Schematic diagram & Dimension:



External components:

- $C_1 = 22nF \pm 5\%$
- $C_2 = C_3 = 15nF \pm 5\%$
- $C_4 = 33nF \pm 5\%$
- $R_1 = R_2 = 68\Omega \pm 1\%$



TOLERANCE: ± 0.2 UNIT: mm

UNIT : mm

Tolerances : $\pm 0.2mm$



UNIVERSAL MICROELECTRONICS CO.,LTD.
TEL:886-4-23590096 FAX:886-4-23590129
<http://www.umec-web.com> E-mail:business@umec.com.tw

3,27TH RD.,TAICHUNG INDUSTRIAL PARK,
TAICHUNG,TAIWAN,R.O.C

E10-033-C